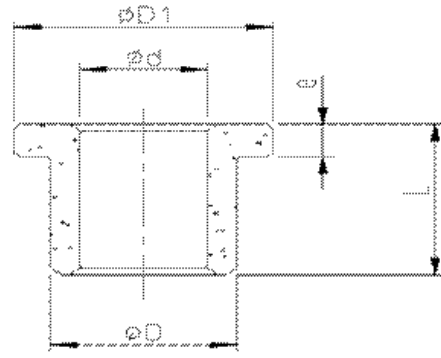


AM, AI, AW



AL, AJ (with flange)

Material Chemical Component	Cu 54-56% Sn 4-6% Fe 39-41%							
Physical and Mechanical Performance	Oil content (%)	≥ 18%	Oil density (g/cm³)	6.2-6.8	Crushing strength (N/mm²)	> 150	Surface hardness (HB)	25-55
HMEC Type no.	Dimension							
	d		D		L		D1	e
AL 121820	12	+0.034 +0.006	18	+0.056 +0.028	20	±0.165	24	3
AL 121808	12	+0.034 +0.006	18	+0.056 +0.028	8	±0.11	24	3
AL 152115	15	+0.034 +0.006	21	+0.066 +0.035	15	±0.135	27	3
AL 152125	15	+0.034 +0.006	21	+0.066 +0.035	25	±0.165	27	3
AL 162212	16	+0.034 +0.006	22	+0.066 +0.035	12	±0.135	28	3
AL 162216	16	+0.034 +0.006	22	+0.066 +0.035	16	±0.165	28	3
AL 162220	16	+0.034 +0.006	22	+0.066 +0.035	20	±0.165	28	3
AL 162225	16	+0.034 +0.006	22	+0.066 +0.035	25	±0.165	28	3
AL 162020	16	+0.034 +0.006	20	+0.066 +0.035	20	±0.165	27	3
AL 182422	18	+0.034 +0.006	24	+0.066 +0.035	22	±0.165	30	3
AL 101310	10	+0.025 +0.000	13	+0.056 +0.028	10	±0.11	17	2.5
AL 101510	10	+0.025 +0.000	15	+0.056 +0.028	10	±0.11	21	3
AL 101520	10	+0.025 +0.000	15	+0.056 +0.028	20	±0.165	21	3
AL 121512	12	+0.034 +0.006	15	+0.056 +0.028	12	±0.135	21	3
AL 121720	12	+0.034 +0.006	17	+0.056 +0.028	20	±0.165	23	3
AL 121725	12	+0.034 +0.006	17	+0.056 +0.028	25	±0.165	23	3
AL 151916	15	+0.034 +0.006	19	+0.066 +0.035	16	±0.135	25	3
AL 151925	15	+0.034 +0.006	19	+0.066 +0.035	25	±0.135	25	3
AL 162016	16	+0.034 +0.006	20	+0.066 +0.035	16	±0.135	27	3
AL 162020	16	+0.034 +0.006	20	+0.066 +0.035	20	±0.165	27	3
AL 040804	4	+0.027 +0.005	8	+0.048 +0.023	4	±0.09	12	2
AL 061010	6	+0.027 +0.005	10	+0.048 +0.023	10	±0.11	14	3
AL 061006	6	+0.027 +0.005	10	+0.048 +0.023	6	±0.09	14	3